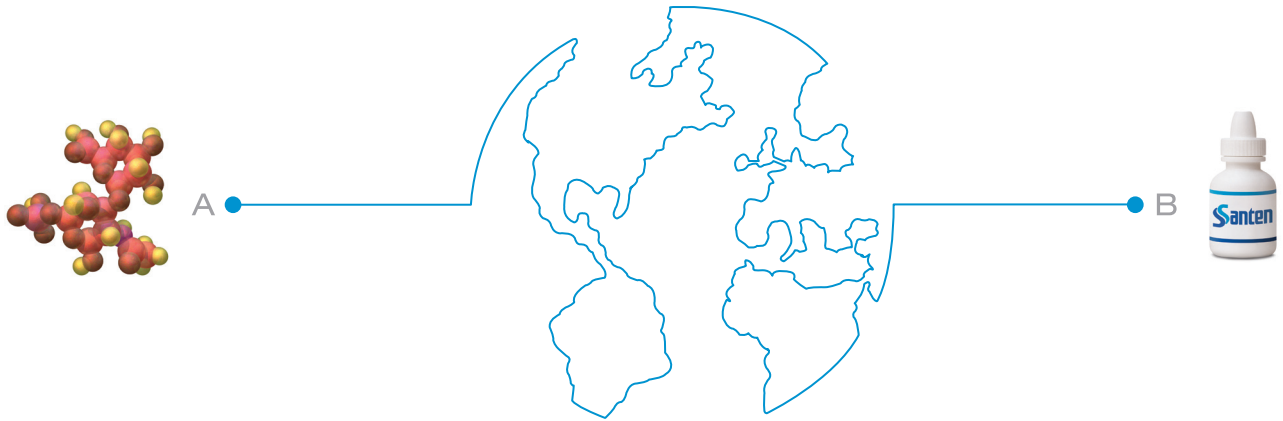


From lab to label



A GLOBAL LEADER IN OPHTHALMOLOGY

Santen

Driving the future of ophthalmology worldwide

Santen has been a leader in ophthalmic innovation for nearly 120 years. Our pioneering vision and open-minded thinking have led to the discovery, development, and introduction of a select series of firsts, including one of the world's first ophthalmic anti-infectives in the quinolone class, the treatment of first choice for eye infections, and the longest-selling ophthalmic brand in Japan.

By leveraging the advantages of both independent innovation and successful collaboration, Santen has advanced the future of ophthalmology with unprecedented insight and energy.

We are committed to applying our unique capabilities in order to contribute to the health and quality of life of patients, their families, and society as a whole.

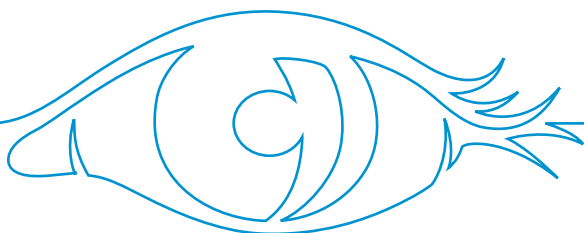


Santen, Inc. USA

Emeryville, CA

Santen's North American headquarters is committed to developing relationships of trust with US ophthalmologists, patients, and partners through scientific advancements that fulfill the promise of ophthalmology. Santen USA accelerates access to our internationally recognized series of capabilities, including:

- Research
- Development
- Clinical and regulatory management
- Production
- Marketing
- Distribution



Robust product portfolio

Ophthalmic pharmaceutical products, USA

Alamast
Betimol
IQUIX
Quixin

Ophthalmic pharmaceutical products, Japan

Alegysal
Cosopt
Cravit
Detanol
Diquas
Hyalein
Rescula
Tapros
Tarivid
Timoptol
Timoptol XE

Ophthalmic products, Europe

Artelac
Fotil
Fotil Forte
Lecrolyn
Lutax/Lutax AMD
Oftagel
Oftan Catachrom
Oftan Timolol/Optimol
Oftaquix
Oxyl
Taflotan
Timosan

Medical devices, Japan

Eternity, foldable intraocular lens (IOL)

Current collaborations

Asahi Glass
Bausch & Lomb
Clinical Data, Inc.
Cytopathfinder
Daiichi Sankyo
Inspire
MacuSight
Merck
Oakwood Laboratories
Ube
Vistakon

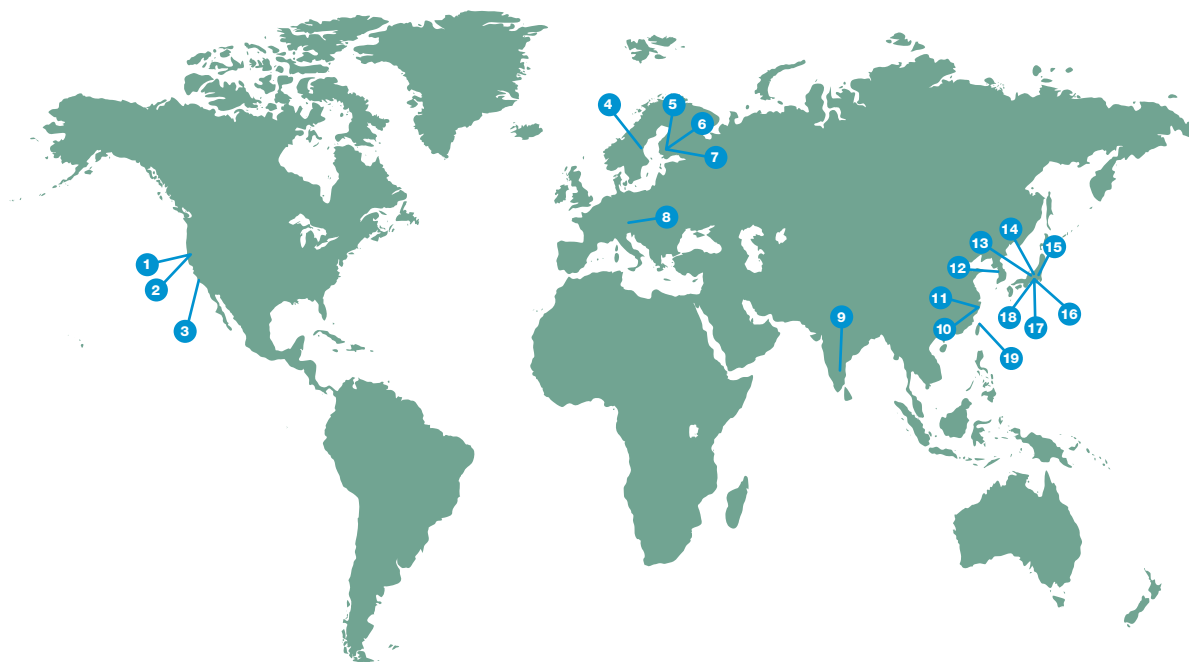
Forging successful alliances

At Santen, we are actively looking to associate with academicians, physicians, scientists, and others involved in the discovery of promising candidates for commercial ophthalmic applications. For inquiries, contact businessdevelopment@santeninc.com

Globally respected. Globally competitive.

Growth. It's simply in our genes. Santen continues to expand its research, regulatory management, production, marketing, and distribution strengths with an efficiency that is unmatched in the ophthalmic pharmaceutical industry.

The Santen clinical development network now spans 3 centers—Japan, the USA, and Europe.



Worldwide Locations

- 1 USA Headquarters
Emeryville, CA
- 2 Global Clinical Development & Medical Affairs
Emeryville, CA
- 3 Advanced Vision Science Headquarters
Goleta, CA
- 4 SantenPharma AB
Solna, Sweden
- 5 European Headquarters
Tampere, Finland
- 6 Clinical/Regulatory Division
Tampere, Finland
- 7 Santen Oy
Tampere, Finland
- 8 Santen GmbH
Germering, Germany
- 9 Santen India Pvt. Ltd.
Bangalore, India
- 10 Santen Pharmaceutical (China) Co., Ltd.
Suzhou, China
- 11 Suzhou Plant
Suzhou, China
- 12 Santen Pharmaceutical Korea, Co., Ltd.
Seoul, Korea
- 13 Shiga Plant
Shiga, Japan
- 14 Noto Plant
Ishikawa, Japan
- 15 Nara Research and Development Center
Nara, Japan
- 16 Corporate Headquarters
Osaka, Japan
- 17 Clinical/Regulatory Division
Osaka, Japan
- 18 Osaka Plant
Osaka, Japan
- 19 Taiwan Santen Pharmaceutical Co., Ltd.
Taipei, Taiwan

From molecule to medicine

Through continuous integration and systemization of its R&D capabilities, Santen has dramatically accelerated its preclinical testing timelines.

From bench to bottle

At Santen, the difference is in the result. We dream big, but our dreams are focused on select areas of ophthalmic opportunity. Santen is developing new drugs targeting glaucoma, corneal disorders, and retinal disease—all ophthalmologic categories where there is large patient demand for new treatment options.

A high-tech research facility fuels the Santen product pipeline



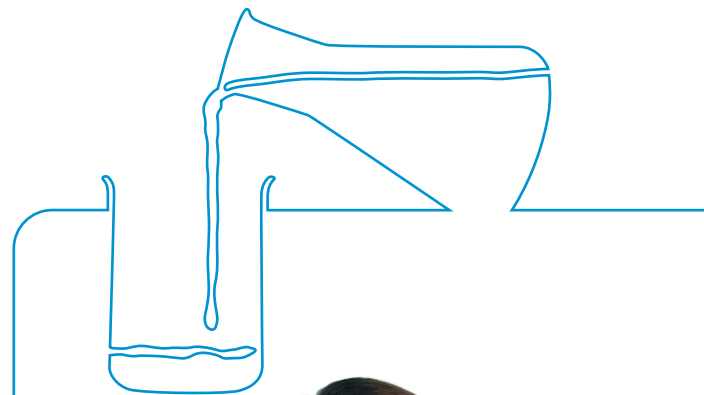
Nara Research and Development Center

Nara, Japan

Equipped with the most advanced research technology in existence, the 256,185-square-foot Nara R&D Center allows over 450 Santen research scientists and staff members to focus 100% of their technical and creative talents on accelerating the discovery of new medicines and new ways of treating ophthalmic diseases. The Santen investment in multiple state-of-the-art research facilities ensures a healthy, continuously growing product pipeline.

Clinical/regulatory divisions

Emeryville, CA
Osaka, Japan
Tampere, Finland



Santen—targeting unmet medical needs

All of Santen's insight, power, efficiency, and innovation work toward a singular goal: the successful development and distribution of new drugs that fulfill significant unmet medical needs.

RETINA

STRATEGIC FOCUS:

- Age-related macular degeneration
- Diabetic macular edema

CURRENT INCIDENCE

Over **18 million Americans** suffer from diseases of the retina¹⁻³

ANTICIPATED GROWTH

20% growth in prevalence of retinal diseases is expected in the US between 2006 and 2015—currently, few treatments are available⁴

GLAUCOMA

STRATEGIC FOCUS:

- IOP reduction
- Neuroprotection

Over **2.2 million Americans** have glaucoma¹

The incidence of glaucoma is **expected to rise** in the US population over the next ten years to numbers **exceeding 3 million**⁵

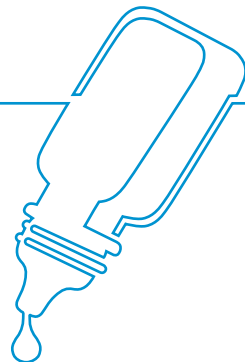
CORNEAL DISORDERS

STRATEGIC FOCUS:

- Dry eye
- Corneal epithelial defects

Nearly **5 million Americans** suffer from dry eye syndrome—millions more have less severe symptoms^{6,7}

Dry eye affects **75% of those over 65**—a population expected to **double by 2030**^{8,9}



References: 1. Statistics and data. National Eye Institute. http://www.nei.nih.gov/eyedata/pbd_tables.asp. Updated October 2008. Accessed March 9, 2009. 2. Diabetic retinopathy. National Eye Institute. <http://www.nei.nih.gov/health/diabetic/retinopathy.asp>. Updated March 2009. Accessed March 9, 2009. 3. Press release. Centers for Disease Control and Prevention. http://www.cdc.gov/media/pressrel/2008/r080624.htm?s_cid=mediarel_r080624_x. Published June 24, 2008. Accessed March 9, 2009. 4. Data on file. Santen Incorporated. 5. Friedman DS, Wolfs RC, O'Colmain BJ, et al. Prevalence of open-angle glaucoma among adults in the United States. *Arch Ophthalmol.* 2004;122(4):532-538. 6. Eye health/blindness news. Medical News Today. <http://www.medicalnewstoday.com/articles/64942.php>. Published March 14, 2007. Accessed March 18, 2009. 7. Focus on dry eye. http://www.chronicdryeye.com/_professionals/_pro_CDE_info/CDE_prevalence.htm. Accessed March 18, 2009. 8. Patient resources. EagleVision. <http://dryeye.org/patients-who.htm>. Published 2002. Accessed March 13, 2009. 9. Population. AgingStats.com. http://www.agingstats.gov/agingstatsdotnet/Main_Site/Data/2008_Documents/Population.aspx. Accessed March 13, 2009.

To find out about partnership opportunities, contact:

Santen Business Development

Tel: 949-852-3519

Fax: 510-655-5682

Email: businessdevelopment@santeninc.com

For information and resources about our product portfolio, please contact:

Santen, Inc. USA

Tel: 415-268-9100

Fax: 510-655-5682

Email: info@santeninc.com



Santen Incorporated

2100 Powell Street, 16th Floor

Emeryville, CA 94608, USA

www.santeninc.com